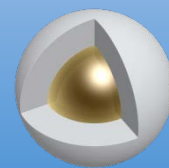
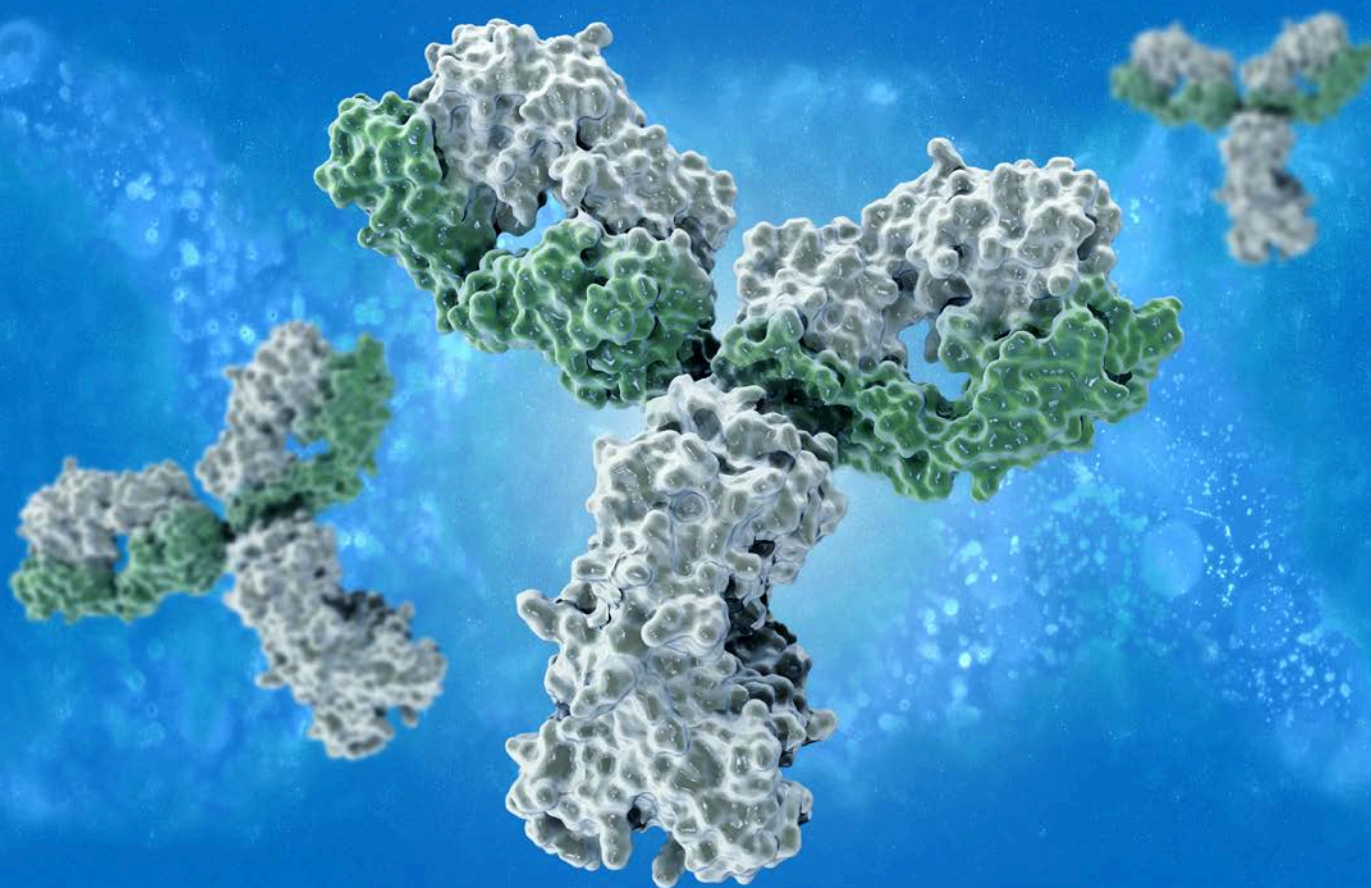


SunShell

C4-100



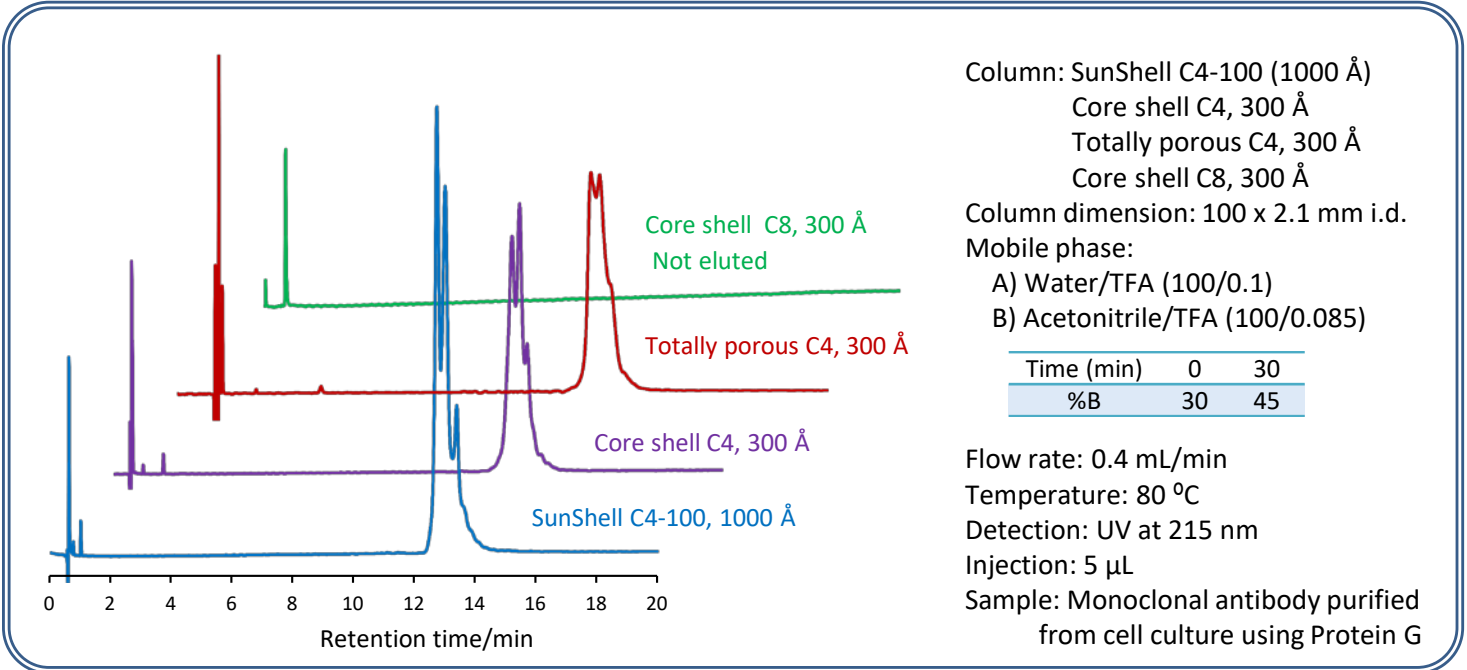
For Separation of Monoclonal Antibody



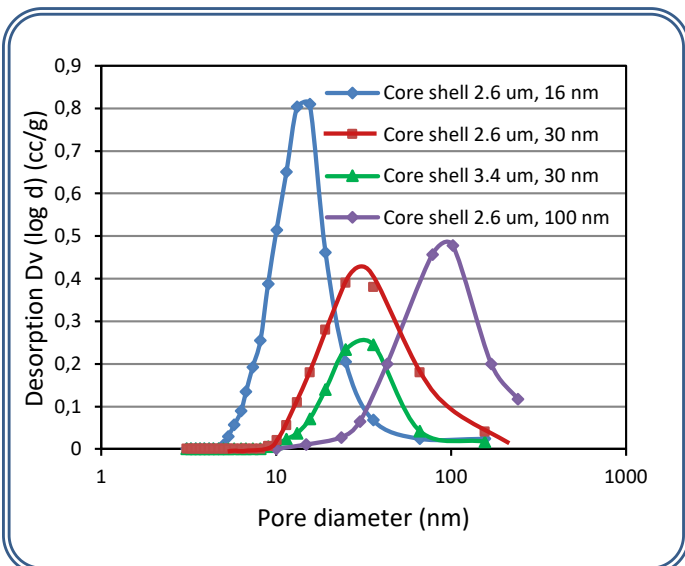
Characteristics of SunShell C4-100

Packings	Core shell silica					Stationary phase					Column
	Particle size	Core size	Pore diameter	Thickness of porous layer	Specific surface area	Carbon loading	Bonded phase	End-capping	Available pH range	USP L category	Maximum operating pressure
SunShell C4-100	2.6 μm	1.6 μm	100 nm	0.5 μm	22 m ² /g	0.6%	C4	Yes	1.5 - 9	L26	60 MPa or 8,570 psi

Separation of Monoclonal antibody (IgG) purified from cell culture using protein G



Pore size distribution of core shell silica



Ordering information of SunShell

	Dimension	Catalog number	USP category
SunShell C4-100, 2.6 μm	50 x 2.1 mm i.d.	C66941	L26
	100 x 2.1 mm i.d.	C66961	
	150 x 2.1 mm i.d.	C66971	

