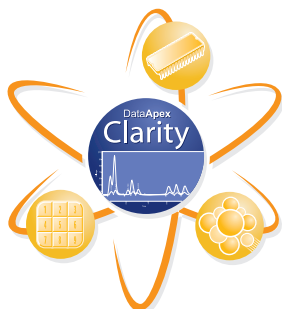


# Clarity CE Extension



## Software module for Capillary Electrophoresis

Capillary Electrophoresis (CE) is used to separate ionic species by their different electrical charge stages. It is very flexible, efficient and high resolution technique, that covers a wide range of applications.

CE Extension provides scientists using Clarity with CE specific terminology.

The CE Extension is an optional addition to Clarity software, it cannot be used as a standalone program.

CLARITY SOFTWARE

CONTROLS

EXTENSIONS

HARDWARE

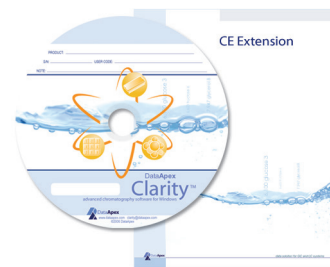
## Clarity CE Extension

### Software module for Capillary Electrophoresis

The CE Extension is an optional fully integrated addition to Clarity software. It can be ordered as a part of new software or as an extension to existing software.

The Clarity Chromatography Software is designed to acquire and evaluate data from up to four multidetector chromatographs at a time (four independent timebases). The Clarity Chromatography Station can acquire data from any GC, HPLC or CE system with standard analog output.

The CE mode is selectable for any Instrument within a station. The CE Extension is also compatible with Clarity Offline software.



## Features

**CE terminology:** The terms used in chromatography were substituted by their CE counterparts, such as Electropherogram, Migration Time, Capillary, Electrolyte, etc.

**Peak identification:** Peaks in CE are often asymmetrical. In some cases the position of peak start is less influenced by analyte concentration and thus better suited for compound identification. The CE Extension allows peaks to be identified, in addition to the standard peak apex, by peak start or peak end time.

**Quantification:** The migration times in CE are influenced significantly by experimental conditions. As the peak area is dependent on the speed by which the peak migrates through a detector cell, the time corrected area is in some cases more suitable for quantification than the area alone.

**Sequence Table:** The enhanced Sequence Table provides new fields for setting the Inlet Vial and Outlet Vial.

## Specification

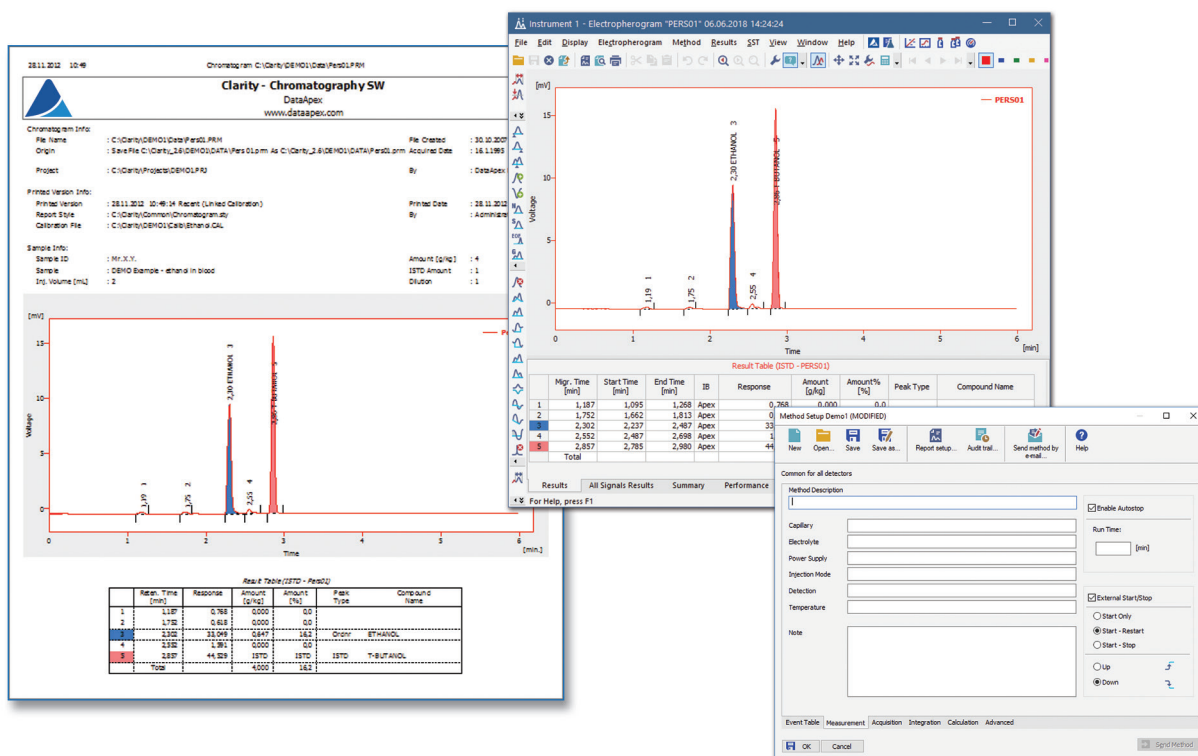
Part No.:

A31

Related products:

Clarity (p/n C50) - required

Clarity Offline (p/n C59)



Distribútor pre SR:

AZ CHROM s.r.o., Robotnícka 10, 831 03 Bratislava  
Tel. 0907 244526 azetchrom@hplc.sk, www.azetchrom.sk