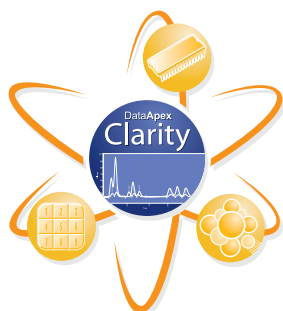


Clarity MS Extension



Software module for processing data from Mass Spectrometry Detectors

The Clarity MS module is a tool for processing data acquired by MS detectors. Spectral data, together with chromatograms, add a third dimension to data analysis.

The Clarity MS module expands Clarity capabilities by providing interactive spectral analysis, peak purity analysis and compound identification based on a spectral library search. MS spectral data can be displayed in the Chromatogram window and printed on reports. Clarity also works with NIST libraries.

The MS Extension is an optional addition to Clarity software, it cannot be used as a standalone program.

CLARITY SOFTWARE

CONTROLS

EXTENSIONS

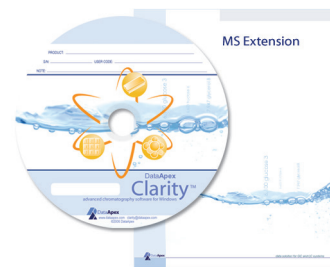
HARDWARE

Clarity MS Extension

Software module for processing 3D data from MS detectors

The MS Extension is an optional, fully integrated addition to Clarity software. It can be ordered as a part of new software or as an extension to existing software.

The MS Extension is fully compatible with both LC Control and GC Control to evaluate the data from both liquid and gas chromatography. On stations with the MS extension activated, new GC-MS and LC-MS types of instruments will become available in the configuration. The MS Extension is also compatible with Clarity Offline software.



Features

MS Data: All data is saved in a single file; a chromatogram on any m/z or a spectrum at any point on the time axis can be simply recalled after an analysis for review. MS spectra acquired using an MS detector may be interactively selected from a chromatogram for visual inspection and comparison. The spectra may also be used for peak purity determinations and component identification through spectral libraries.

MS Method: The Clarity MS method allows any compound to be quantified on any m/z, TIC, BPI or external signals. The identity of the compound can be confirmed using Spectral Library Search and Peak Purity analysis.

Peak Purity: This analysis helps to discover hidden impurities. Purity is calculated from 5 or all spectra within the peak. Peak Purity analysis can be optimized by setting custom preferences relating to the purity threshold, m/z range restriction and intensity threshold.

Spectral Library: The Clarity software works flawlessly with NIST libraries, comparing the peak spectra with the spectra of an unlimited number of spectra from multiple libraries. Spectra stored in a Spectral Library may include retention indices and analysis parameters. The Spectral Library Search can perform automatic identification of integrated/calibrated components (peaks). The library search may be constrained by the RT Window and/or by m/z ions used. Background Correction option is also available.

Import/Export Data: Spectral data can be imported/exported in several formats to or from the Clarity software, including netCDF, mzML and mzXML formats.

Reports: Users can easily include MS report sections, graphs and tables into the report in the intuitive Report Setup dialog.

Instrument Control: Control modules for several MS detectors, both for LC and GC, are being developed at the moment. Please contact sales@dataapex.com to find out about the availability of your MS detector control module.

Specification

Part No.:

A38

Related Products:

Clarity (p/n C50) - required

Clarity offline (p/n C59)

LC Control (p/n A24) or GC Control (p/n A23)

