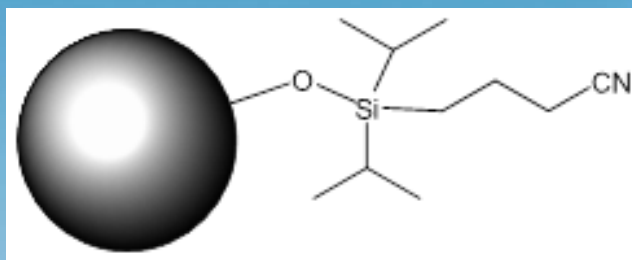


NEW! HALO ES-CN



- Moderately polar phase for alternate selectivity
 - Increased retention of polar compounds
 - Decreased retention of hydrophobic compounds
- Steric-Protected silane for low pH stability
- Fully end-capped for neutral pH applications

Separation of mixed EPA explosive standards 8330 A and B on HALO C18 and ES-CN Phases

Conditions:

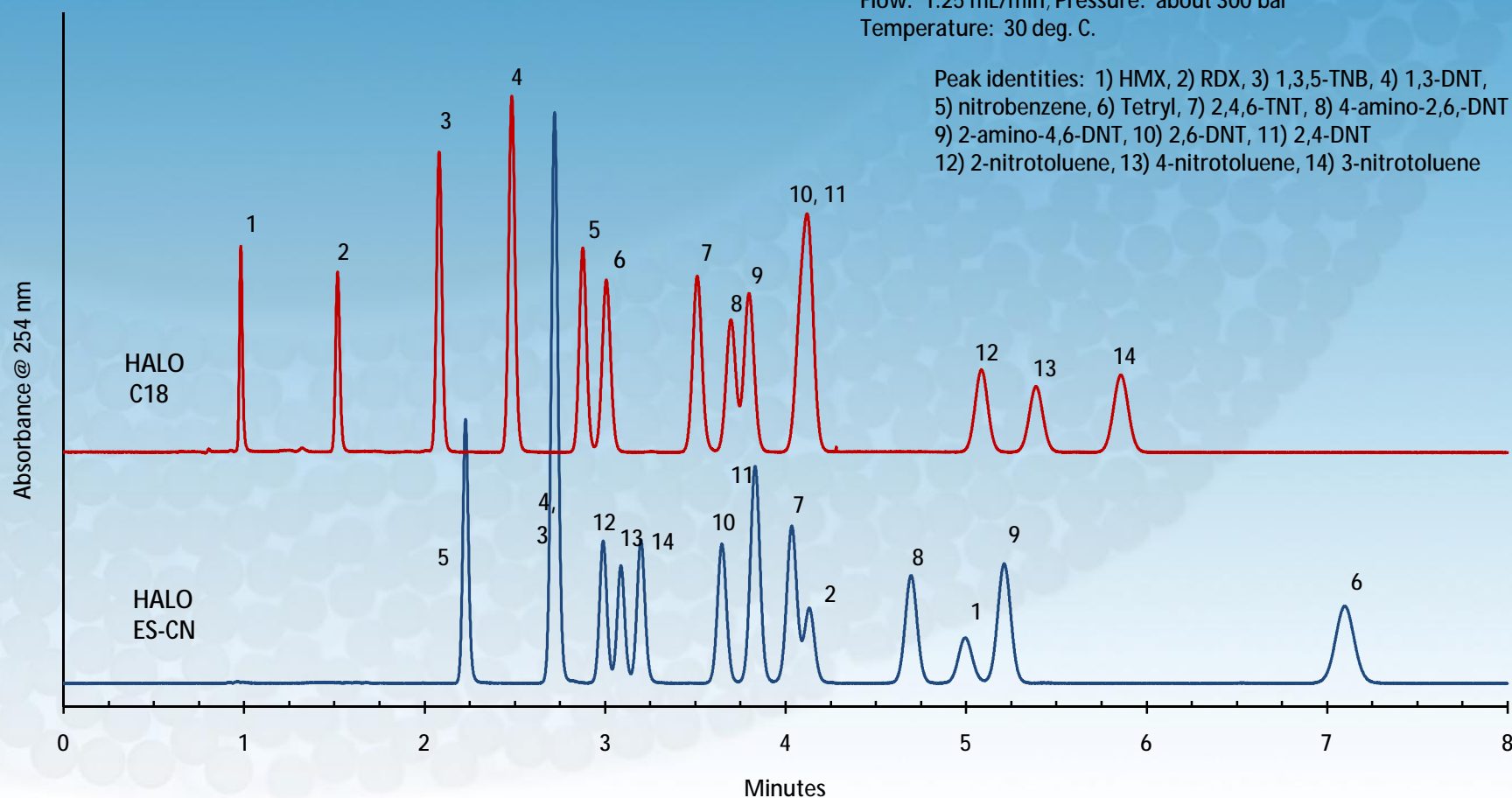
Columns: 4.6 x 100 mm, HALO C18, HALO ES-CN

Mobile phase: 50/50:Methanol/water

Flow: 1.25 mL/min; Pressure: about 300 bar

Temperature: 30 deg. C.

Peak identities: 1) HMX, 2) RDX, 3) 1,3,5-TNB, 4) 1,3-DNT,
5) nitrobenzene, 6) Tetryl, 7) 2,4,6-TNT, 8) 4-amino-2,6,-DNT
9) 2-amino-4,6-DNT, 10) 2,6-DNT, 11) 2,4-DNT
12) 2-nitrotoluene, 13) 4-nitrotoluene, 14) 3-nitrotoluene



Selectivity ES-CN vs. C18

Columns: 4.6 x 100mm
Mobile phase: 40/60-water/MeOH for C18
50/50-water/MeOH for ES-CN
Flow rate: 1.25 mL/min
Pressure: 310 Bar
Temperature: 30 °C.

