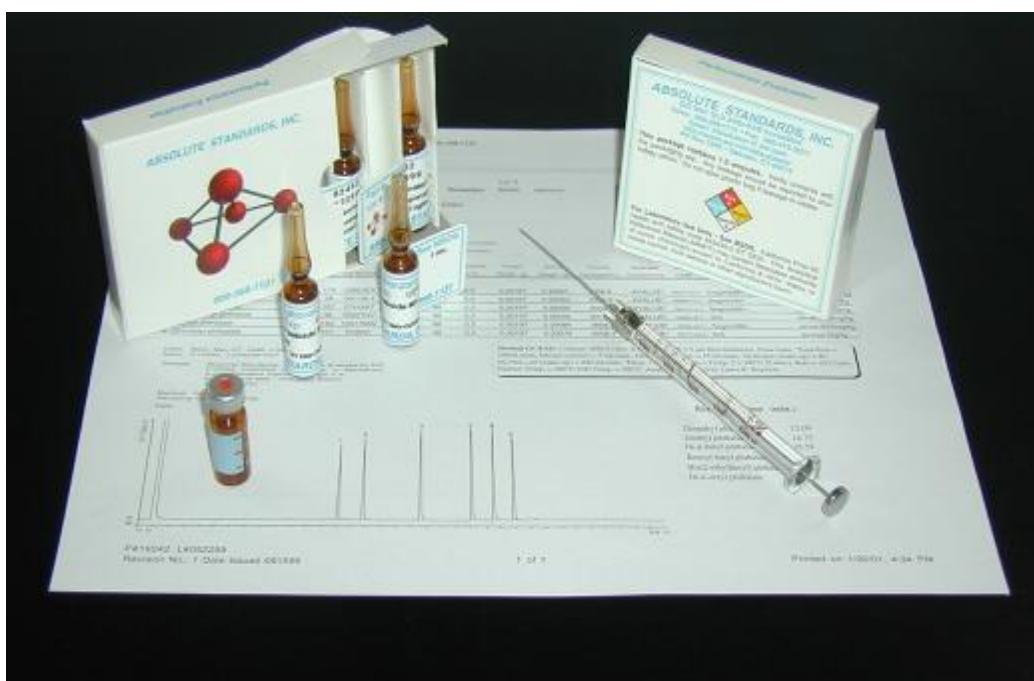




Príklady štandardov pripravených na zákazku

(podľa špecifikácie zákazníkov)



VOC

92753	VOC Mix-23	23 analytes, 50ug/ml in MeOH, 1ml		
		1,1-Dichloroethene trans-1,2-Dichloroethene 1,2-Dichlorobenzene 1,4-Dichlorobenzene 1,2,3-Trichlorobenzene 1,2,4-Trichlorobenzene 1,3,5-Trichlorobenzene	Benzene Bromodichloromethane Bromoform Chlorobenzene Chlorodibromomethane Chloroform Dichloromethane Styrene	Ethylbenzene m-Xylene o-Xylene p-Xylene Tetrachloroethene Tetrachloromethane Toluene Trichloroethene

92221	VOC Mix-12	12 analytes, 2000ug/ml in MeOH, 1ml		
		Chloroform 1,2-Dichloroethane Benzene Tetrachloromethane	Trichloroethylene Toluene Tetrachloroethylene Chlorobenzene	o-Xylene p-Xylene p-Dichlorobenzene o-Dichlorobenzene

90512	Volatile Mix 1	11 analytes, 100ug/ml in MEOH, 1ml		
		Bromodichloromethane Bromoform Carbon Tetrachloride Chlorobenzene	Chloroform Dibromochloromethane 1,2-Dichloroethane Methylene Chloride	Tetrachloroethane 1,1,1-Trichloroethane Trichloroethene

92815	VOC Mix A1	6 analytes, 200ug/ml in MeOH, 1ml		
92814	VOC Mix A2	6 analytes, 2000ug/ml in MeOH, 1ml		
		Benzene Toluene Ethylbenzene	Styrene o-Xylene m-Xylene	

92821	VOC Mix B1	4 analytes, 200ug/ml in MeOH, 1ml		
92820	VOC Mix B2	4 analytes, 2000ug/ml in MeOH, 1ml		
		Chlorobenzene 1,2-Dichlorobenzene	1,3-Dichlorobenzene 1,4-Dichlorobenzene	

92817	VOC Mix C1	3 analytes, 200ug/ml in MeOH, 1ml		
92816	VOC Mix C2	3 analytes, 2000ug/ml in MeOH, 1ml		
		Dichloromethane Chloroform Carbon Tetrachloride		

92819	VOC Mix D1	6 analytes, 200ug/ml in MeOH, 1ml		
--------------	-------------------	--	--	--

92818	VOC Mix D2	6 analytes, 2000ug/ml in MeOH, 1ml		
--------------	-------------------	---	--	--

1,2-Dichloroethane	cis-1,2-Dichloroethene	Trichloroethene
1,1-Dichloroethene	trans-1,2-Dichloroethene	Tetrachloroethene

92851	VOC Mix	17 analytes, 2000ug/ml in MeOH, 1ml		
--------------	----------------	--	--	--

Benzene	1,2-Dichlorobenzene	Tetrachloroethene
Toluene	1,3-Dichlorobenzene	Bromodichloromethane
Ethylbenzene	1,4-Dichlorobenzene	Bromoform
p-Xylene	Carbon Tetrachloride	Chlorodibromomethane
Styrene	cis-1,2-Dichloroethene	Chloroform
Chlorobenzene	Trichloroethene	

93384	VOC Mix	19 analytes, 2000ug/ml in MeOH, 1ml		
--------------	----------------	--	--	--

Benzene	1,2-Dichloroethane	Tetrachloroethene
Bromodichloromethane	cis-1,2-Dichloroethene	Toluene
Bromoform	trans-1,2-Dichloroethene	Trichloroethene
Carbon Tetrachloride	Ethyl benzene	o-Xylene
Chlorobenzene	Methylene chloride	m-Xylene
Chloroform	Styrene	p-Xylene
Dibromochloromethane		

93403	VOC Mix	23 analytes, 50ug/ml in MeOH, 1ml		
--------------	----------------	--	--	--

Benzene	Carbon tetrachloride	1,1-Dichloroethene
Toluene	Chlorobenzene	cis-1,2-Dichloroethene
Ethyl benzene	Chloroform	trans-1,2-Dichloroethene
o-Xylene	Dibromochloromethane	Methylene chloride
m-Xylene	1,2-Dichlorobenzene	Styrene
p-Xylene	1,3-Dichlorobenzene	Tetrachloroethene
Bromodichloromethane	1,4-Dichlorobenzene	Trichloroethene
Bromoform	1,2-Dichloroethane	

93040	VOC Mix	6 analytes, 200ug/ml in MeOH, 1ml		
--------------	----------------	--	--	--

Bromodichloromethane	Bromoform	Carbon tetrachloride
Chloroform	Dibromochloromethane	Methylene chloride

PAH

92220 PAH Mix A-6 6 analytes, 10ug/ml in Acetonitrile, 1ml

Fluoranthene	Benzo(a)pyrene
Benzo(b)fluoranthene	Benzo(g,h,i)perylene
Benzo(k)fluoranthene	Indeno(1,2,3-cd)pyrene

92582 PAH Mix-9 9 analytes, 10ug/ml in Acetonitrile, 1ml

Benzo(a)anthracene	Benzo(a)pyrene	Indeno(1,2,3-cd)pyrene
Benzo(b)fluoranthene	Chrysene	Dibenzo(a,i)pyrene
Benzo(k)fluoranthene	Dibenzo(a,h)anthracene	Dibenzo(a,h)pyrene

19362 PAH Mix-13 13 analytes, 500ug/ml in Acetone, 1ml

Acenaphthalene	Benzo(a)pyrene	Fluorene
Anthracene	Benzo(g,h,i)perylene	Indeno(1,2,3-cd)pyrene
Benzo(a)anthracene	Chrysene	Phenanthrene
Benzo(b)fluoranthene	Dibenzo(a,h)anthracene	Pyrene
Benzo(k)fluoranthene		

92688 PAH Mix-16 16 analytes, x ug/ml in Acetonitrile, 1ml

Acenaphthene.....	100ug/ml	Chrysene.....	10ug/ml
Acenaphthylene.....	100ug/ml	Dibenzo(a,h)anthracene.....	10ug/ml
Anthracene.....	10ug/ml	Fluoranthene.....	10ug/ml
Benzo(a)anthracene.....	10ug/ml	Fluorene.....	10ug/ml
Benzo(a)pyrene.....	10ug/ml	Indeno(1,2,3-cd)pyrene.....	10ug/ml
Benzo(b)fluoranthene.....	10ug/ml	Napthalene.....	100ug/ml
Benzo(g,h,i)perylene.....	10ug/ml	Phenanthrene.....	10ug/ml
Benzo(k)fluoranthene.....	10ug/ml	Pyrene.....	10ug/ml

94049 PAH Mix-18 18 analytes, 100 ug/ml in Acetonitrile, 1ml

Acenaphthene	Benzo(g,h,i)perylene	Chrysene
Acenaphthylene	Benzo(a)pyrene	Indeno(1,2,3-cd)pyrene
Anthracene	Benzo(e)pyrene	Napthalene
Benzo(a)anthracene	Dibenzo(a,h)anthracene	Phenanthrene
Benzo(b)fluoranthene	Fluoranthene	Perylene
Benzo(k)fluoranthene	Fluorene	Pyrene

NITROAROMATICS STANDARD

93141 Nitroarom. Mix 22 analytes, 100ug/ml in MeOH, 1ml

Nitrobenzene	2-Nitrotoluene	1-Chloro-3-nitrobenzene
1,2-Dinitrobenzene	3-Nitrotoluene	1-Chloro-4-nitrobenzene
1,3-Dinitrobenzene	4-Nitrotoluene	4-Chloro-2-nitrotoluene
1,4-Dinitrobenzene	2,3-Dichloronitrobenzene	2-Chloro-4-nitrotoluene
2,4-Dinitrotoluene	2,5-Dichloronitrobenzene	1-Chloronaphthalene
2,6-Dinitrotoluene	3,4-Dichloronitrobenzene	2,5-Dichlorotoluene
2,3-Dinitrotoluene	1-Chloro-2,4-dinitrobenzene	
3,4-Dinitrotoluene	1-Chloro-2-nitrobenzene	

SUBSTITUTE AROMATIC HYDROCARBONS

93032 AROM C8-C10 10 analytes, 10ug/ml in n-Pentane, 1ml

93037 AROM C8-C10 10 analytes, 100ug/ml in n-Pentane, 1ml

1,2,3-Trimethylbenzene	2-Ethyltoluene	1,2-Diethylbenzene
1,2,4-Trimethylbenzene	3-Ethyltoluene	1,3-Diethylbenzene
1,3,5-Trimethylbenzene	4-Ethyltoluene	1,4-Diethylbenzene
1,2,4,5-Tetramethylbenzene		

93033 AROM >C10 14 analytes, 10ug/ml in n-Pentane, 1ml

93038 AROM >C10 14 analytes, 100ug/ml in n-Pentane, 1ml

1-Methylnaphthalene	1-Methylphenanthrene	1,4-Dimethylnaphthalene
2-Methylnaphthalene	2-Methylphenanthrene	1,7-Dimethylnaphthalene
1-Ethylnaphthalene	1-Methylanthracene	1,8-Dimethylnaphthalene
2-Ethylnaphthalene	2-Methylanthracene	2,3-Dimethylnaphthalene
		2,6-Dimethylnaphthalene
		2,3,5-Trimethylnaphthalene

CHLOROPHENOLS

92168 Phenol Mix 1A 6 analytes, 100ug/ml in MeOH, 1ml

4-Chlorophenol	2,6-Dichlorophenol	2,4,6-Trichlorophenol
2,4-Dichlorophenol	2,4,5-Trichlorophenol	Pentachlorophenol

92236 Phenol Mix 1B 6 analytes, 100ug/ml in MeOH, 1ml

Phenol	2,4,6-Trichlorophenol	2,3,4,5-Tetrachlorophenol
2,4-Dichlorophenol	2,3,4,6-Tetrachlorophenol	Pentachlorophenol

92237 Dichlorophenol Mix 4 5 analytes, 100ug/ml in MeOH, 1ml

2,3-Dichlorophenol	3,4-Dichlorophenol
2,5-Dichlorophenol	3,5-Dichlorophenol
2,6-Dichlorophenol	

92238 Phenol Mix 5 6 analytes, 100ug/ml in MeOH, 1ml

2,3,4-Trichlorophenol	2,4,5-Trichlorophenol	3,4,5-Trichlorophenol
2,3,5-Trichlorophenol	2,3,6-Trichlorophenol	2,3,5,6-Tetrachlorophenol

92242 Phenol Mix 3 8 analytes, x ug/ml in Acetone, 1ml

2,6-Dichlorophenol....20ug/ml	2,4,6-Trichlorophenol...120ug/ml
3,5-Dichlorophenol....20ug/ml	2,4,5-Trichlorophenol....10ug/ml
2,4-Dichlorophenol....20ug/ml	Pentachlorophenol.....100ug/ml
3,4-Dichlorophenol....20ug/ml	
2,3-Dichlorophenol....20ug/ml	

92487 Phenol Mix-7 7 analytes, 100ug/ml in MeOH, 1ml

4-Chlorophenol	2,4,5-Trichlorophenol	2,3,4,6-Tetrachlorophenol
2,4-Dichlorophenol	2,4,6-Trichlorophenol	Pentachlorophenol
2,6-Dichlorophenol		

92771 Chlorophenol Mix-19 19 analytes, 10ug/ml in Acetone, 1ml

2-Chlorophenol	2,3,4-Trichlorophenol	2,3,4,5-Tetrachlorophenol
3-Chlorophenol	2,3,5-Trichlorophenol	2,3,4,6-Tetrachlorophenol
4-Chlorophenol	2,3,6-Trichlorophenol	2,3,5,6-Tetrachlorophenol
2,3-Dichlorophenol	2,4,5-Trichlorophenol	Pentachlorophenol
2,4-Dichlorophenol	2,4,6-Trichlorophenol	
2,5-Dichlorophenol	3,4,5-Trichlorophenol	
2,6-Dichlorophenol		
3,4-Dichlorophenol		

3,5-Dichlorophenol

92284 Chlorophenol Mix 2 4 analytes, 100ug/ml in MeOH, 1ml

2-Chlorophenol 4-Chlorophenol
3-Chlorophenol 4-Chloro-3-Methylphenol

92190 Phenol Mix-2 2 analytes, 100ug/ml in MeOH, 1ml

2,3-Dichlorophenol
3,4-Dichlorophenol

PHTHALATES

92772 Phthalate Mix 10 analytes, 2000ug/ml in Acetone, 1ml

Dimethyl phthalate Di-isobutyl phthalate Butylbenzylphthalate
Diethyl phthalate Di-pentyl phthalate Di-cyclohexylphthalate
Di-n-Propyl phthalate Di-n-Octyl phthalate
Di-n-Butyl phthalate Bis(2-ethylhexyl)phthalate

ANILINE STANDARD

93140 Aniline Mix 8 analytes, 100ug/ml in Methylene chloride, 1ml

Aniline 2-Chloroaniline
N-ethylaniline 3-Chloroaniline
Benzidine 4-Chloroaniline
3,4-Dichloroaniline 4-Chloro-2-nitroaniline



PESTICIDES

92681	Pest. Mix 12	20 analytes, 10ug/ml in Ethylacetate, 1ml		
		Aldicarb	1,3-Dichlorpropen	Metazachlor
		Atrazine	a-Endosulfan	Metobromuron
		Bentazone	b-Endosulfan	Metoxuron
		Chlortoluron	Isoproturon	Sebuthylazine
		Cyanazine	Lindane	Simazine
		2,4 - D	MCPA	Terbuthylazine
		Dichlorprop	Mecoprop	
92682	Pest. Mix 1	5 analytes, 10ug/ml in Ethylacetate, 1ml		
92683	Pest. Mix 1A	5 analytes, 100ug/ml in Ethylacetate, 1ml		
		Aldicarb	Metobromuron	
		Chlortoluron	Metoxuron	
		Isoproturon		
92684	Pest. Mix 2	6 analytes, 10ug/ml in Ethylacetate, 1ml		
92685	Pest. Mix 2A	6 analytes, 100ug/ml in Ethylacetate, 1ml		
		Atrazine	Sebuthylazine	
		Cyanazine	Simazine	
		Metazachlor	Terbuthylazine	
92686	Pest. Mix 3	5 analytes, 10ug/ml in Ethylacetate, 1ml		
92687	Pest. Mix 3A	5 analytes, 100ug/ml in Ethylacetate, 1ml		
		Bentazone	MCPA	
		2,4 - D	Mecoprop	
		Dichlorprop		
92699	Pest. Mix 4	4 analytes, 10ug/ml in Ethylacetate, 1ml		
		Hexachlorobenzene	Mirex	
		Isodrin	Oxy-Chlordane	
93261	Triazine Mix	9 analytes, 100ug/ml in Acetone, 1ml		
		Atrazine	Hexazinone	Prometryn
		Simazine	Terbutryn	Terbutylazine
		Desethylatrazine	Propazine	Lenacil
93552	Triazine Mix	12 analytes, 100ug/ml in Acetone, 1ml		
		Alachlor	Hexazinone	Propazine
		Atrazine	Lenacil	Simazin

Cyanazine
Desethylatrazine

Prometon
Prometryn

Terbutylazine
Terbutryn

92296 Pesticide Mix 1 7 analytes, 10ug/ml in Hexane:Toluene (1:1), 1ml

4,4'- DDD
4,4'- DDT
4,4'- DDE

g-BHC (Lindane)
Heptachlor
Hexachlorobenzene
Methoxychlor

92297 Pesticide Mix 2 7 analytes, x ug/ml in Isooctane, 1ml

4,4'- DDT.....15ug/ml
4,4'- DDE.....15ug/ml
Methoxychlor.....20ug/ml
Heptachlor.....10ug/ml

Hexachlorobenzene..10ug/ml
g-BHC (Lindane).....10ug/ml
Aldrin.....10ug/ml

92298 Pest. Mix 3-5 5 analytes, x ug/ml in MeOH, 1ml

Hexachlorobenzene..10ug/ml
g-BHC (Lindane).....10ug/ml
Heptachlor.....20ug/ml

4,4'- DDT.....20ug/ml
Methoxychlor.....50ug/ml

92282 Pest. Mix 1-7 7 analytes, x ug/ml in Isooctane, 1ml

Hexachlorobenzene...10ug/ml
Lindane.....10ug/ml
Heptachlorepoxyde....10ug/ml

Aldrin.....10ug/ml
Methoxychlor.....20ug/ml
4,4'- DDE.....15ug/ml
4,4'- DDT.....15ug/ml

92283 Pest. Mix 2A-9 9 analytes, 10ug/ml in Isooctane:Acetone (95:5), 1ml

a-BHC
b-BHC
g-BHC (Lindane)

4,4'- DDE
4,4'- DDT
4,4'- DDD

2,4'- DDT
Dieldrin
Hexachlorobenzene

93138 Pest. Mix 1-13 13 analytes, 100ug/ml in Acetone, 1ml

Alachlor
Chlorpyrifos
a-Endosulfan
Terbutryn
Trifluralin

Aldrin
Dieldrin
Endrin
Isodrin

Desethylatrazine
Atrazine
Simazine
Hexazinone

93139 Pest. Mix 2-12 12 analytes, 100ug/ml in Acetone, 1ml

Hexachlorobenzene
a-BHC
b-BHC
g-BHC (Lindane)

d-BHC
Octachlorostyrene
2,4'- DDT
4,4'- DDT

2,4'- DDD
4,4'- DDD
2,4'- DDE
4,4'- DDE

OCP + PCB

92451	OCP Mix A	3 analytes, 20ug/ml in Isooctane, 1ml		
		Heptachloroepoxide	b-Endosulfan	Endrin
92452	OCP Mix B	3 analytes, x ug/ml in Isooctane, 1ml		
		Hexachlorobenzene.....10ug/ml	Heptachlor.....15ug/ml	a-Endosulfan.....20ug/ml
92453	OCP Mix C	6 analytes, x ug/ml in Isooctane, 1ml		
		4,4'- DDD.....15ug/ml	Aldrin.....15ug/ml	
		4,4'- DDE.....15ug/ml	Methoxychlor.....20ug/ml	
		4,4'- DDT.....15ug/ml	Mirex.....30ug/ml	
92454	OCP Mix D	6 analytes, x ug/ml in Isooctane, 1ml		
		a-HCH.....10ug/ml	Dieldrin.....15ug/ml	
		b-HCH.....10ug/ml	Trifluralin.....20ug/ml	
		g-HCH.....10ug/ml		
		d-HCH.....10ug/ml		
92366	PCB Mix	7 analytes, 10ug/ml in Isooctane, 1ml		
		PCB - 28	PCB - 118	PCB - 153
		PCB - 52	PCB - 138	PCB - 180
		PCB - 101		
93089	PCB+OCP Mix	23 analytes, 10ug/ml in Isooctane:Toluene(95:5), 1ml		
		Aldrin	Endrin	PCB - 28
		Dieldrin	a-BHC	PCB - 52
		2,4'- DDD	b-BHC	PCB - 101
		4,4'- DDD	g-BHC (Lindane)	PCB - 118
		2,4'- DDE	d-BHC	PCB - 138
		4,4'- DDE	Heptachlor	PCB - 153
		2,4'- DDT	trans-Heptachlor epoxide	PCB - 180
		4,4'- DDT	Hexachlorobenzene	
93174	PCB+OCP Mix	24 analytes, in Isooctane:Toluene(95:5), 1ml		
		23 analytes (93089), 10ug/ml		
		CYPERMETHRIN, 100ug/ml		
93383	OCP Mix	9 analytes, 10ug/ml in Isooctane, 1ml		

Aldrin
g-BHC (Lindane)
4,4'- DDE

4,4'- DDT
Dieldrin
Heptachlor

Heptachlor epoxide
Hexachlorobenzene
4,4'- Methoxychlor
